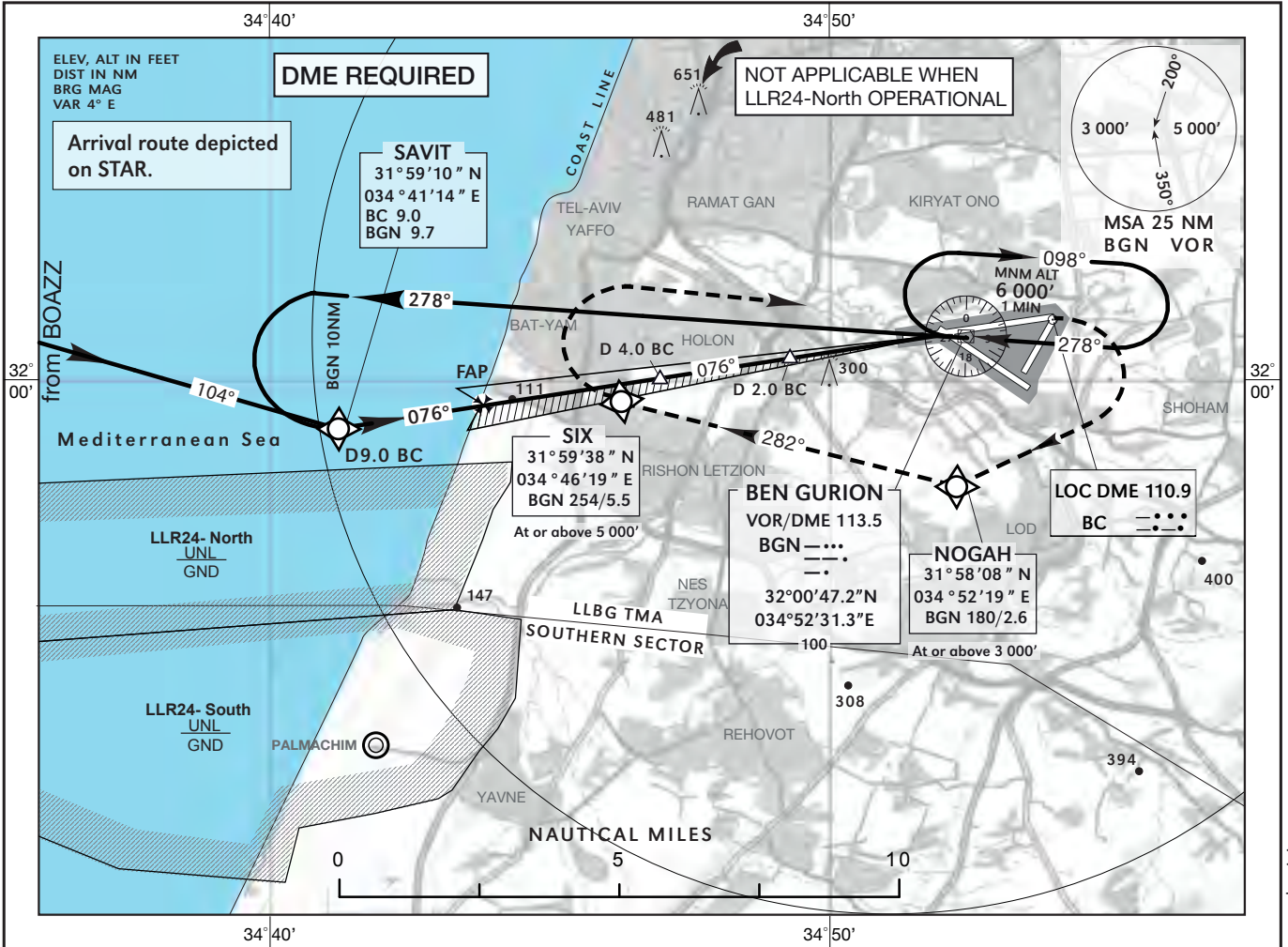


**INSTRUMENT
APPROACH CHART**

AERODROME ELEV **134 ft**
HEIGHTS RELATE TO
THR ELEV **97 ft**

APP **120.50**
TWR **132.10**
TMA **119.50**

**TEL-AVIV / BEN-GURION
ILS RWY 08**



MISSED APPROACH:

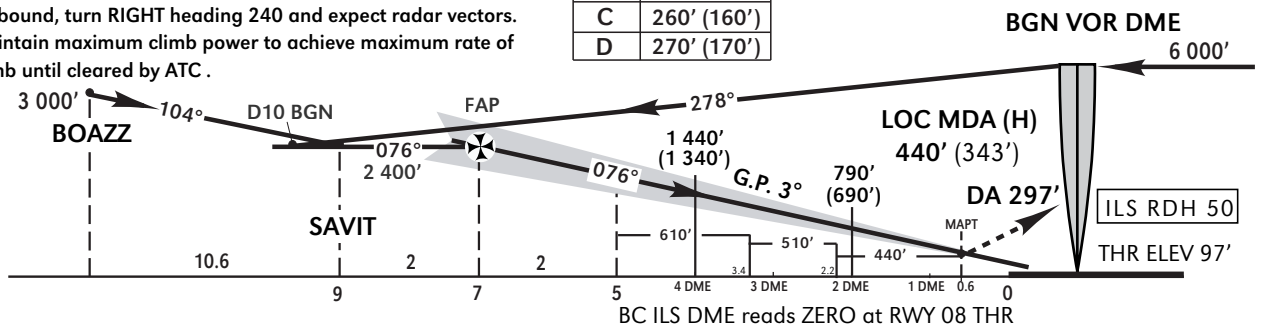
Due to traffic considerations, this MAP requires a climb GRAD of 5.8% , If unable to comply, inform ATC.

RNAV ACFT: Climb straight ahead, at BGN 1.0 DME outbound, turn RIGHT to cross NOGAH at 3 000' or above, SIX at 5 000' or above, turn RIGHT to BGN VOR 6 000' and hold.

Non RNAV ACFT: Climb straight ahead, at BGN 1.0 DME outbound, turn RIGHT heading 240 and expect radar vectors. Maintain maximum climb power to achieve maximum rate of climb until cleared by ATC .

BC ILS DME	5.0	4.0	3.0	2.0
ALT (HAT)	1 760' (1 660')	1 440' (1 340')	1 110' (1 010')	790' (690')

	OCA/H
A	240' (140')
B	250' (150')
C	260' (160')
D	270' (170')



Straight-in Approach

Circling

	ILS DA (H) 297' (200')		LOC (GP INOP) MDA (H) 440' (343')		MAX KT	High terrain EAST of airport. Remain within BGN 3.8 DME ①	
	FULL	ALS OUT	FULL	ALS OUT		MDA (H)	VIS
A					90	580' (446')	1600 m
B	VIS / RVR 800 m	VIS / RVR 1200 m	VIS / RVR 1200 m	VIS / RVR 1600 m	120	600' (466')	1600 m
C					140	600' (466')	2400 m
D					165	700' (566')	3200 m

Ground speed KT	90	100	120	140	160	180
Rate of descent FPM	477	530	636	742	850	955

① Note the circling limit refers to BGN VOR DME