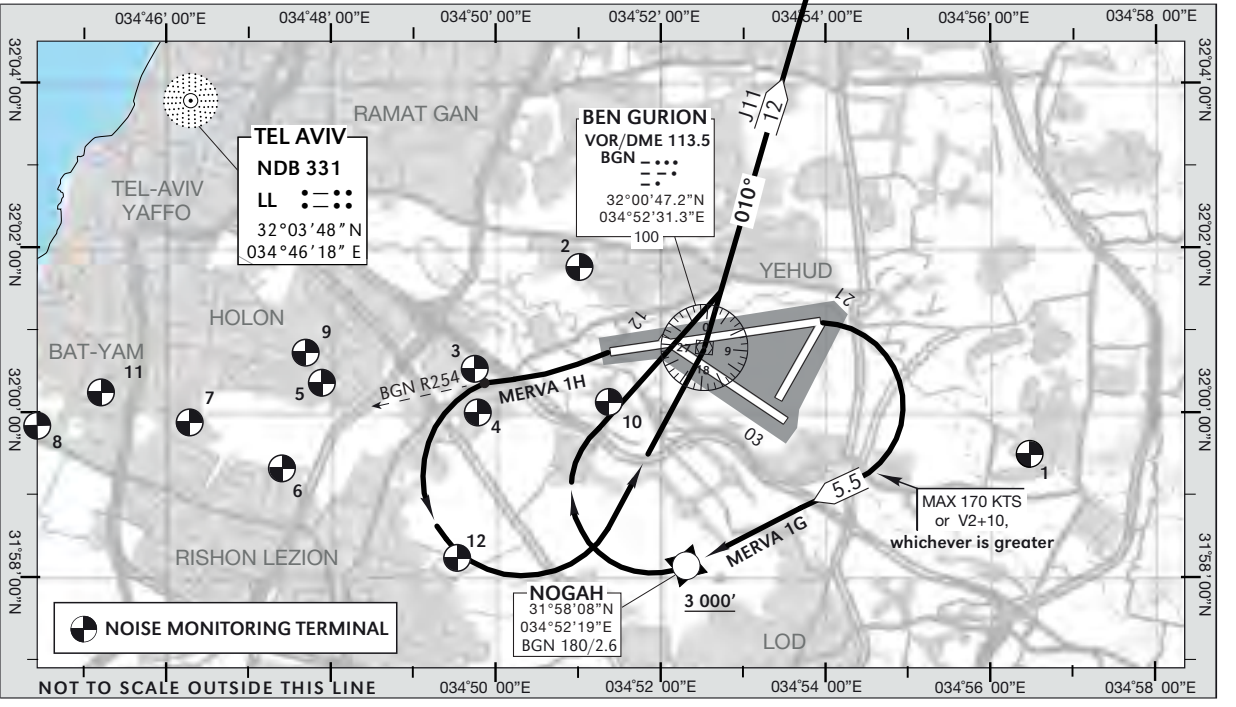
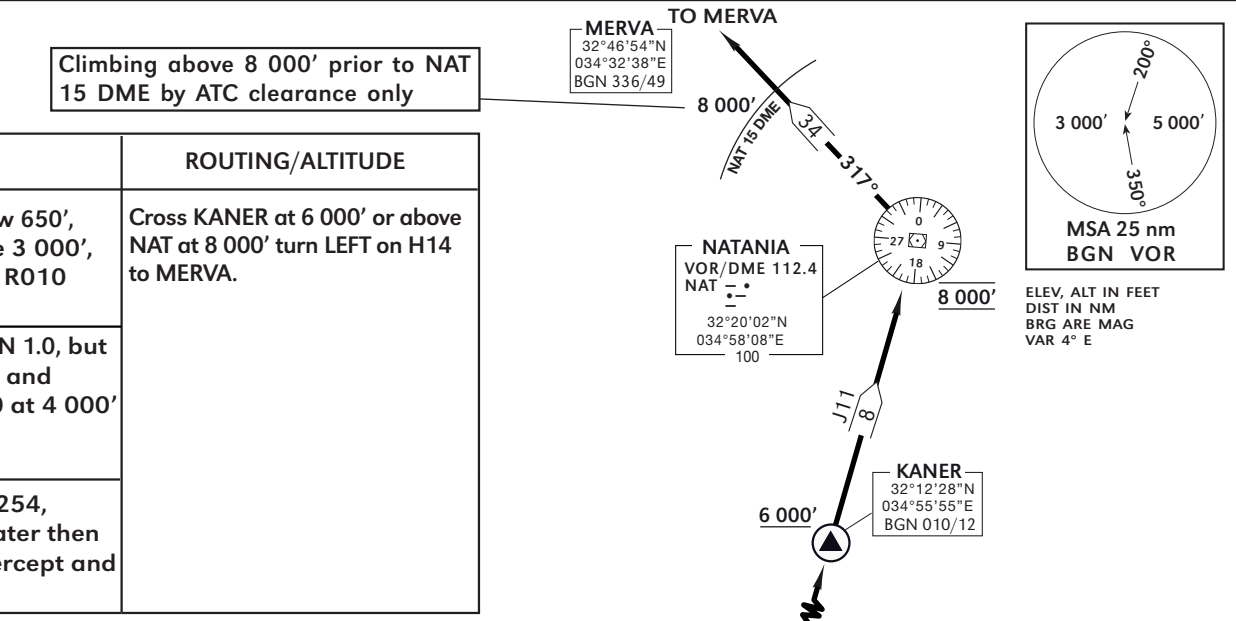


TRANSITION ALTITUDE
10 000 FT

TWR	132.10
DEP	120.50
ACC	121.40

TEL-AVIV / BEN-GURION
RWY 08,26
MERVA 1G, MERVA 1H



Climbing above 8 000' prior to NAT
15 DME by ATC clearance only

SID	RWY	TAKE - OFF	ROUTING/ALTITUDE
MERVA 1G	08	Straight ahead, at BGN 1.0, but not below 650', turn RIGHT to cross NOGAH at or above 3 000', turn RIGHT to intercept and follow BGN R010 NORTHBOUND.	Cross KANER at 6 000' or above NAT at 8 000' turn LEFT on H14 to MERVA.
		Non RNAV ACFT: Straight ahead, at BGN 1.0, but not below 650', turn RIGHT heading 245 and expect radar vectors to cross BGN R270 at 4 000' to intercept and follow BGN R010 NORTHBOUND.	
MERVA 1H	26	As soon as practicable intercept BGN R254, at 600', but not before 1 DME and not later then 2.2 DME turn LEFT to BGN VOR and intercept and follow R010 NORTHBOUND.	

Max IAS 250 KTS below 10 000'

COM failure: Maintain 9 000' prior to MERVA

GENERAL INSTRUCTIONS

All SIDs include noise preferential routes. speed limitations - see noise abatement (AIP LLBG AD 2.21)

As soon as practicable after take-off, contact departure on 120.50 MHZ.

SID MERVA 1H requires a MNM climb gradient of 410' per NM (6.7%) up to 3 000':

Ground speed - KTS	90	120	150	180	210
MNM ROC-FPM	610	810	1020	1220	1430

SID MERVA 1G requires a MNM climb gradient of 390' per NM (6.4%) up to 4 000':

Ground speed - KTS	90	120	150	180	210
MNM ROC-FPM	580	780	980	1170	1360

If unable to comply with climb gradients advise ATC before take-off.