

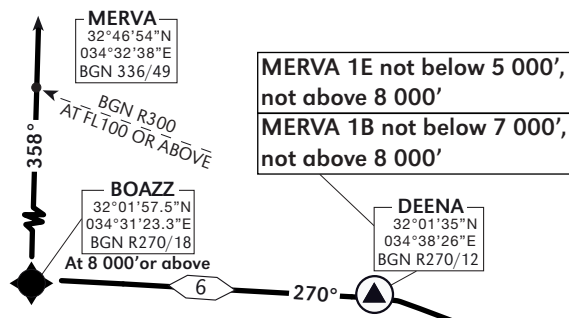
ELEV, ALT IN FEET
DIST IN NM
BRG ARE MAG
VAR 4° E

SID	RWY	TAKE - OFF	ROUTING/ALTITUDE
MERVA 1B	08	Straight ahead, at BGN 1.0, but not below 650', turn RIGHT to cross NOGAH at or above 3 000'.	From NOGAH continue to cross SIX at 5 000' or above, Intercept BGN/R270 via DEENA not below 7 000' and not above 8 000', cross BOAZZ at 8 000' or above.
		Non RNAV ACFT: Straight ahead, at BGN 1.0, but not below 650', turn RIGHT heading 245 and expect radar vectors.	Cross BGN/R180 at 3 000' or above, SIX at 5 000' or above. intercept BGN/R270 via DEENA not below 7 000' and not above 8 000', and cross BOAZZ at 8 000' or above.
MERVA 1E	26	As soon as practicable fly to SIX and cross BGN 7 DME at 3 000' .	Fly to SIX, then to DEENA, then to BOAZZ. Cross BGN 7 DME at 3 000', DEENA at 5 000' or above (not above 8 000'), BOAZZ at 8 000' or above.
		Non RNAV ACFT: As soon as practicable intercept RDL 254 BGN to SIX, turn RIGHT heading 282 to DEENA. cross BGN 7 DME at 3 000' .	Intercept BGN R270 via DEENA at 5 000' or above, and cross BOAZZ at 8 000' or above.

NOTE: This SID shall be in use: weeknights (sunday - thursday): 23:00 - 06:00
weekends: friday at 14:00 to sunday at 06:00

Max IAS 250 KTS below 10 000' until crossing 7DME west of BGN

TO MERVA



GENERAL INSTRUCTIONS

All SIDs include noise preferential routes. speed limitations - see noise abatement (AIP LLBG AD 2.21)
As soon as practicable after take-off, contact Departure on 120.50 MHZ.
SID 1E requires a MNM climb gradient of 450'/NM (7.4%) up to 8 000': ①

Ground speed - KTS	90	120	150	180	210
MNM ROC-FPM	675	900	1125	1350	1575

SID 1B requires a MNM climb gradient of 470'/NM (7.7%) up to 5 000': ①

Ground speed - KTS	90	120	150	180	210
MNM ROC-FPM	705	940	1175	1410	1645

① If unable to comply advise ATC, before take-off and expect SID PURLA.

