

TWR	132.10
DEP	120.50
ACC	121.40

TEL-AVIV / BEN-GURION
RWYS 08,26
ORVIM 1B, ORVIM 1E

Climbing above 8 000' prior to NAT
12 DME westbound by ATC clearance only

SID	RWY	TAKE - OFF	ROUTING/ALTITUDE
ORVIM 1B	08	Straight ahead, at BGN 1.0 DME, but not below 650', turn RIGHT to cross NOGAH at or above 3 000', turn RIGHT to intercept and follow BGN R010 NORTHBOUND. Non RNAV ACFT: Straight ahead, at BGN 1.0 DME, but not below 650', turn RIGHT heading 245° and expect radar vectors to cross BGN R270 at 4 000' to intercept and follow BGN R010 NORTHBOUND.	Cross KANER at or above 6 000', NAT at 8 000'. Turn LEFT on NAT R303 to ORVIM climbing to clearance altitude. Climbing above 8 000' before crossing NAT 12 DME westbound by ATC clearance only.
ORVIM 1E	26	As soon as practicable intercept BGN R254, at 600', but not before BGN 1.0 DME and not later than BGN 2.2 DME turn LEFT to BGN VOR to intercept and follow BGN R010 NORTHBOUND.	

Max IAS 250 KTS below 10 000'

COM failure: Maintain 8 000' prior to ORVIM

GENERAL INSTRUCTIONS

All SIDs include noise preferential routes. Speed limitations - see noise abatement (AIP LLBG AD 2.21)
As soon as practicable after take-off, contact departure on 120.5 MHZ.

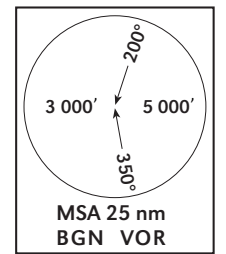
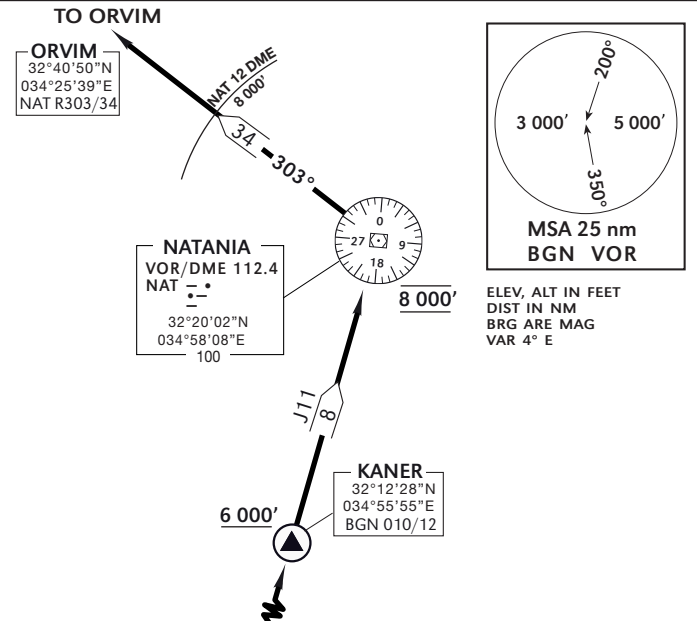
SID ORVIM 1E requires a MNM climb gradient of 410' per NM (6.7%) up to 3 000':

Ground speed KTS	90	120	150	180	210
MNM ROC - FPM	610	810	1020	1220	1430

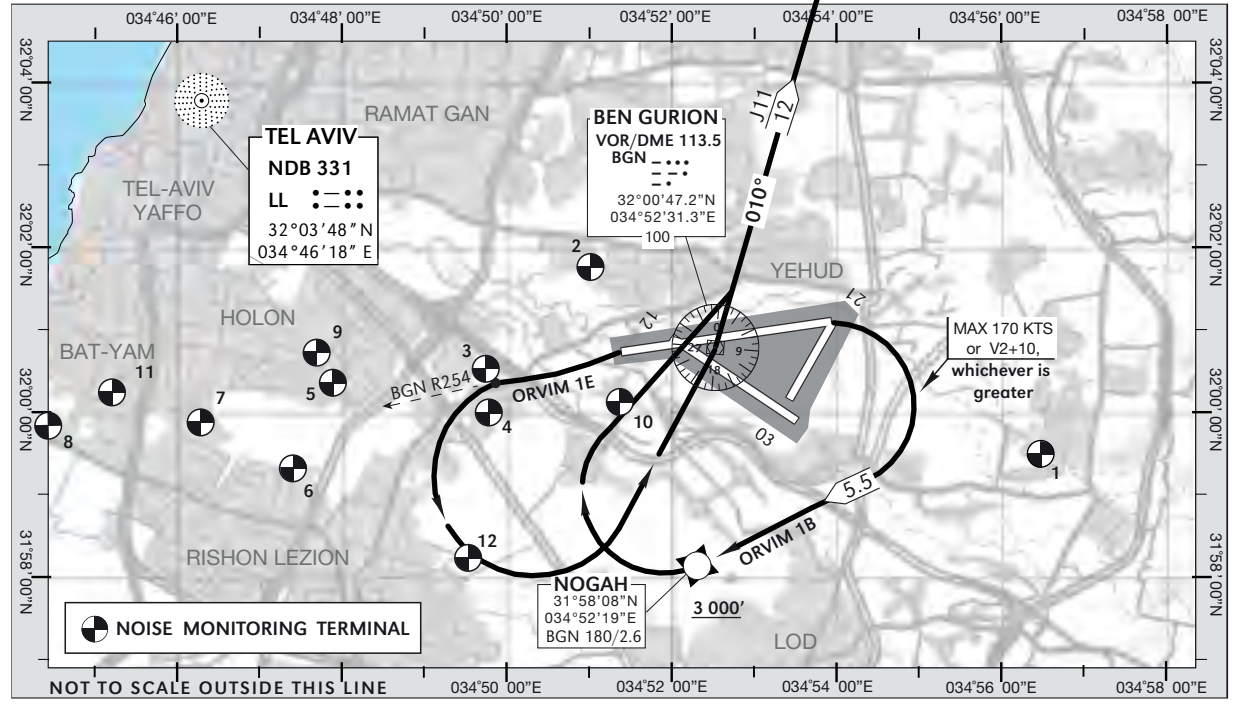
SID ORVIM 1B requires a MNM climb gradient of 390' per NM (6.4%) up to 4 000':

Ground speed KTS	90	120	150	180	210
MNM ROC - FPM	580	780	980	1170	1360

If unable to comply with climb gradients advise ATC before take-off.



ELEV, ALT IN FEET
DIST IN NM
BRG ARE MAG
VAR 4° E



NOISE MONITORING TERMINAL

NOT TO SCALE OUTSIDE THIS LINE