

ELEV, ALT IN FEET
DIST IN NM
BRG ARE MAG
VAR 4° E

GENERAL INSTRUCTIONS

This SID includes noise preferential routes.

For speed limitations - see noise abatement (refer to LLBG AD 2.21).

As soon as practicable after take-off contact Ben-Gurion Departure on 120.50 MHZ.

This SID requires a minimum climb gradient of 470' per NM (7.7%) up to 5 000':

Ground speed - KTS	90	120	150	180	210
MNM ROC - FPM	700	940	1175	1400	1645

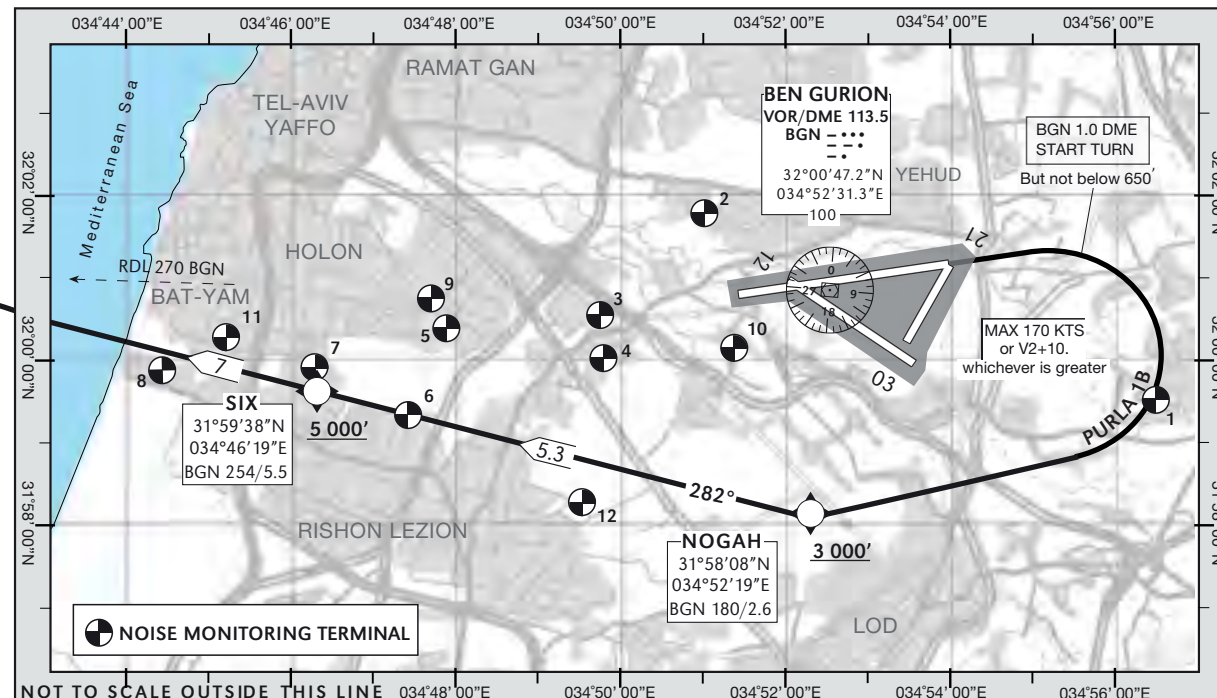
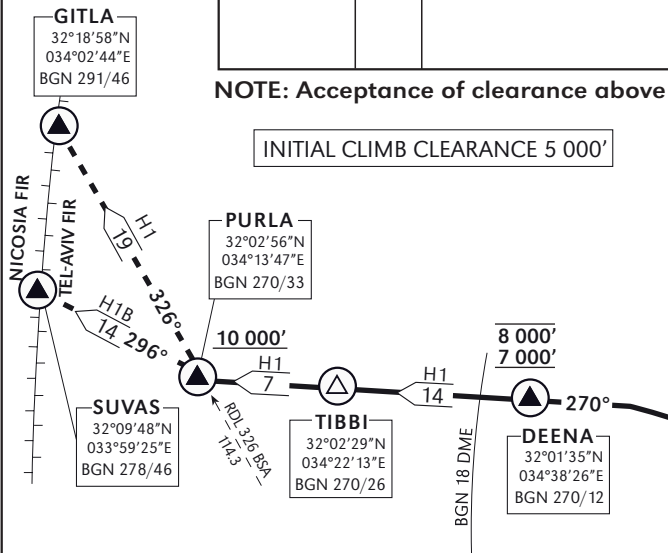
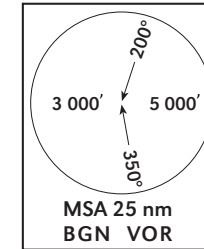
If unable to comply, advise ATC before take-off.

SID	RWY	TAKE - OFF	ROUTING/ALTITUDE	NOTE
PURLA 1B	08	Climb straight ahead, at BGN 1.0 DME but not below 650', turn promptly RIGHT to NOGAH.	Cross NOGAH at 3 000' or above Cross SIX at 5 000' or above Intercept BGN R270 via DEENA to PURLA Cross DEENA Between 7 000' - 8 000' Cross PURLA at 10 000' or above.	None RNAV ACFT: After take-off turn RIGHT heading 240° and expect RADAR vectoring to DEENA.

NOTE: Acceptance of clearance above 8 000' before crossing DEENA does not cancel the requirement to cross DEENA between 7 000'- 8 000'.

PURLA DEPARTURE (WESTBOUND)
PURLA ONE BRAVO (PURLA 1B)

SPEED RESTRICTION
Max IAS 250 KT below 10 000'
except over water.



COMMUNICATION FAILURE

1. Select mode A code 7600.
2. Climb to SIX 5 000', DEENA 7 000', and PURLA 10 000'.
3. Maintain 10 000' to GITLA or SUVAS, then climb to FPL altitude.

TRANSITION ALTITUDE
10 000 FT

TWR 132.10
DEP 120.50
ACC 121.40

TEL-AVIV / BEN-GURION
RWY08
PURLA 1B

CHANGE: Amended crossing altitudes, NMT locations.