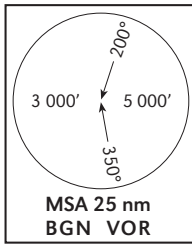


TRANSITION ALTITUDE
10 000 FT

TWR 132.10
DEP 120.50
ACC 121.40

TEL-AVIV / BEN-GURION
RWYS 26, 30
PURLA 1E, PURLA 1F
PURLA 1F Special



PURLA DEPARTURES (WESTBOUND)
 PURLA ONE ECHO (PURLA 1E)
 PURLA ONE FOXTROT (PURLA 1F)
 PURLA ONE FOXTROT Special (PURLA 1F Special)

SPEED RESTRICTION
 Max IAS 250 KT below 10 000'
 except over water.

GENERAL INSTRUCTIONS

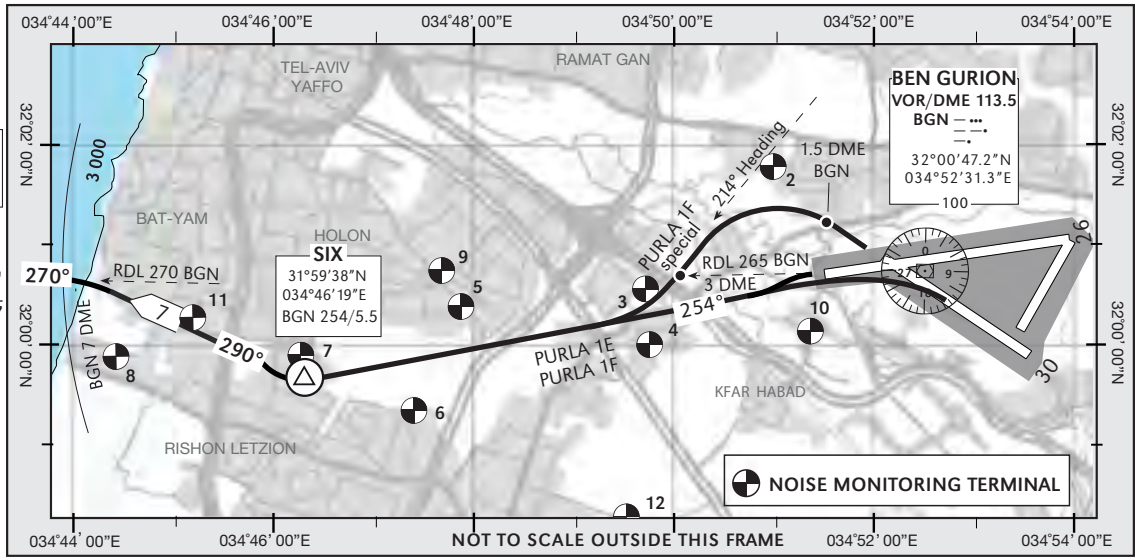
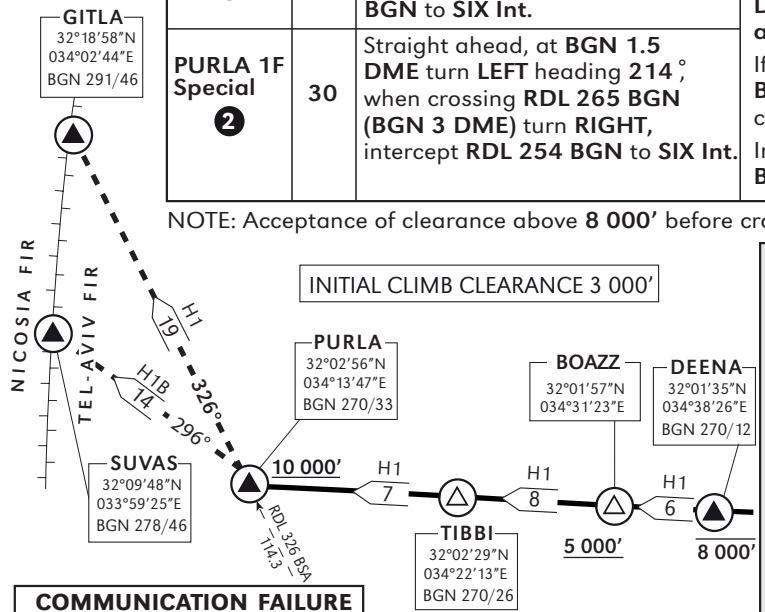
All SIDs include noise preferential routes.
 Initial climb straight ahead to **534 (400' QFE)**.
 For speed limitations - see noise abatement (refer to LLBG AD 2.21).
 As soon as practicable after take-off contact Ben-Gurion Departure on 120.50 MHZ.
 These SIDs require a minimum climb gradient of **430'** per NM (7%) up to **3 000'**:

Ground speed - KT	90	120	150	180	210	240
MNM ROC - FPM	645	860	1075	1290	1505	1720

If unable to comply, advise ATC before take-off.

SID	RWY	TAKE-OFF	ROUTING/ALTITUDE	NOTES
PURLA 1E	26	As soon as practicable intercept RDL 254 BGN to SIX Int.	Turn RIGHT, 290° track to intercept RDL 270 BGN via DEENA to PURLA .	<p>To be assigned only during the period 0600-2300 local time. This procedure shall not be in force when the reported visibility is less than 1600m.</p> <p>1 If unable to comply, see LLBG AD 2.21 for immediate turn departure. If unable to comply, during the periods 0600-0800 & 1600-2300 local time, execute PURLA 1F special, or request RWY 26 and execute PURLA 1E.</p> <p>2 To be assigned only during the period 0600-0800 & 1600-2300 local time.</p>
PURLA 1F 1	30	At or above 534' turn LEFT without traversing RWY 26 centerline, intercept RDL 254 BGN to SIX Int.	Cross BGN 7 DME (coast line) at 3 000' or as instructed by ATC. Cross DEENA at or below 8 000' and cross BGN 18 DME at or above 5 000' . Cross PURLA at 10 000' or above.	
PURLA 1F Special 2	30	Straight ahead, at BGN 1.5 DME turn LEFT heading 214° , when crossing RDL 265 BGN (BGN 3 DME) turn RIGHT , intercept RDL 254 BGN to SIX Int.	If unable to reach 3 000' at BGN 7 DME , or 5 000' at BOAZZ , request ATC upon receipt of start-up clearance to assign the flight a lower altitude. In any case, cross BGN 7 DME at or above 2 200' and BGN 18 DME at or above 4 000' .	

NOTE: Acceptance of clearance above **8 000'** before crossing **DEENA** does not cancel the mandatory requirement to cross **DEENA** at or below **8 000'**.



COMMUNICATION FAILURE

1. Select mode **A** code **7600**.
2. Maintain **3 000'** or climb as cleared by ATC until **BGN 7 DME** then climb and maintain **8 000'** to **GITLA** or **SUVAS** and
3. Climb to FPL altitude.