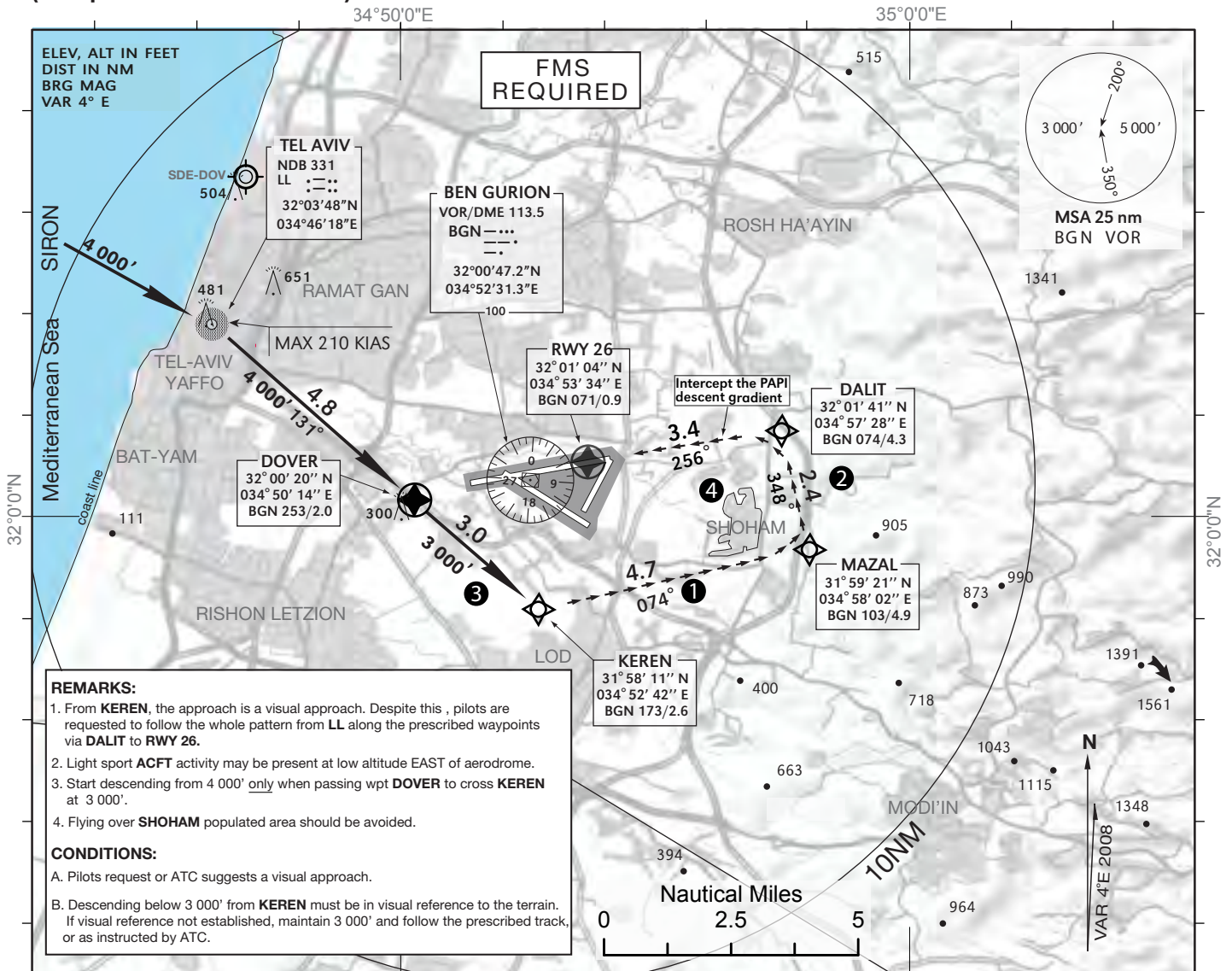


**VISUAL
APPROACH CHART
(with prescribed RNAV track)**

AERODROME ELEV **134 ft**
THR RWY 26 - ELEV **125 ft**

APP **120.50**
TWR **132.10**

**TEL-AVIV / BEN-GURION
KEREN VISUAL RWY 26**



REMARKS:

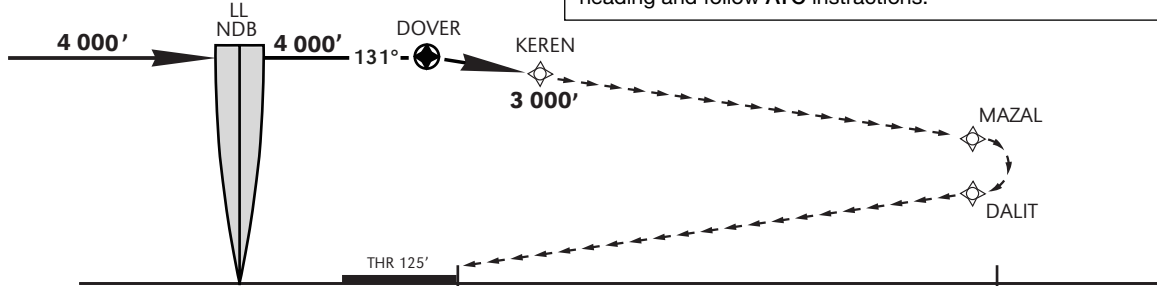
1. From **KEREN**, the approach is a visual approach. Despite this, pilots are requested to follow the whole pattern from **LL** along the prescribed waypoints via **DALIT** to **RWY 26**.
2. Light sport **ACFT** activity may be present at low altitude **EAST** of aerodrome.
3. Start descending from **4 000'** only when passing wpt **DOVER** to cross **KEREN** at **3 000'**.
4. Flying over **SHOHAM** populated area should be avoided.

CONDITIONS:

- A. Pilots request or ATC suggests a visual approach.
- B. Descending below **3 000'** from **KEREN** must be in visual reference to the terrain. If visual reference not established, maintain **3 000'** and follow the prescribed track, or as instructed by ATC.

**GO AROUND ON THE VISUAL SEGMENT OF THE APPROACH
(after passing KEREN):**

maintain or climb to **3 000'**, continue along the prescribed waypoints, after passing **DALIT** and aligned with **RWY CL**, continue on **RWY** heading and follow ATC instructions.



**VISUAL LANDING RWY 26
CEILING - VISIBILITY**

3 000' - 5 KM