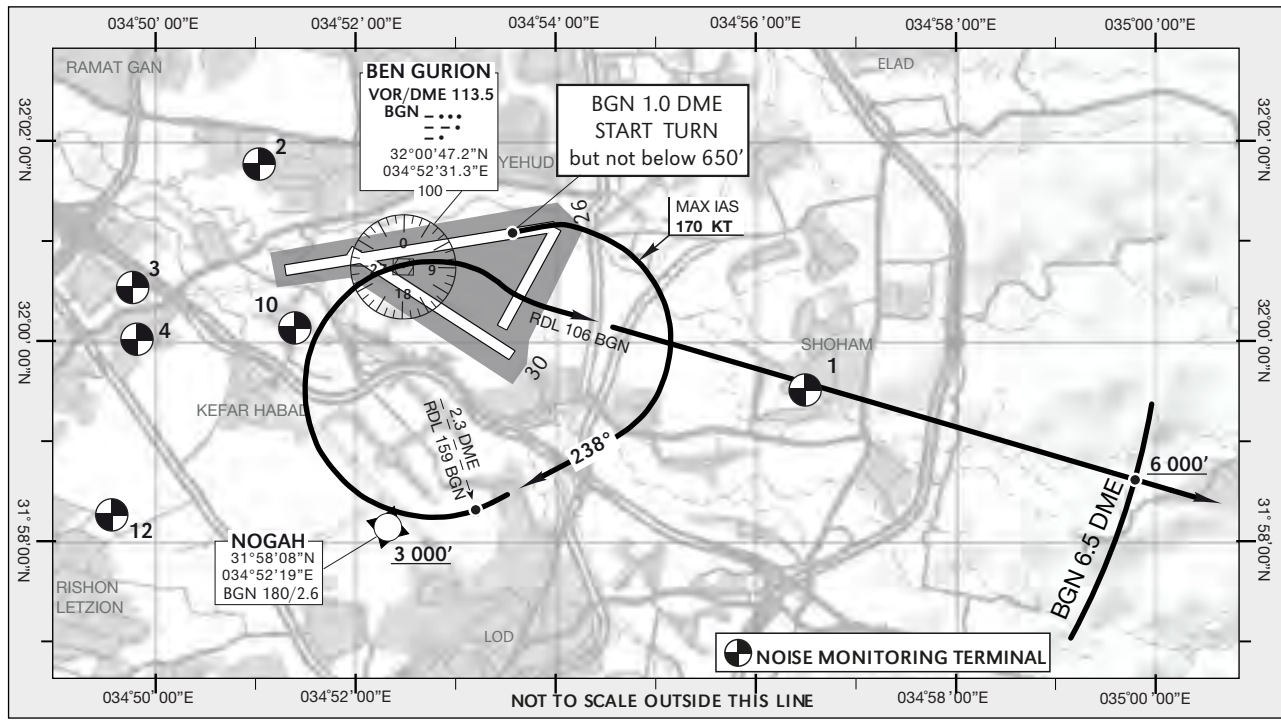


TALMI DEPARTURE (EASTBOUND)
TALMI TWO BRAVO (TALMI 2B)

ELEV. ALT IN FEET
DIST IN NM
BRG ARE MAG
VAR 4° E

SID	RWY	TAKE - OFF	ROUTING/ALTITUDE
TALMI 2B	08	At BGN 1.0 DME but not below 650' turn RIGHT to NOGAH (heading 238° for non RNAV ACFT). When crossing NOGAH (BGN R159 for non RNAV ACFT) Continue RIGHT via BGN VOR to intercept and follow R106 BGN outbond.	Join J10 climbing to TALMI to 9 000' (or to clearance altitude). Cross NOGAH at 3 000' or above. Cross BGN 6.5 DME eastbound at or above 6 000'.

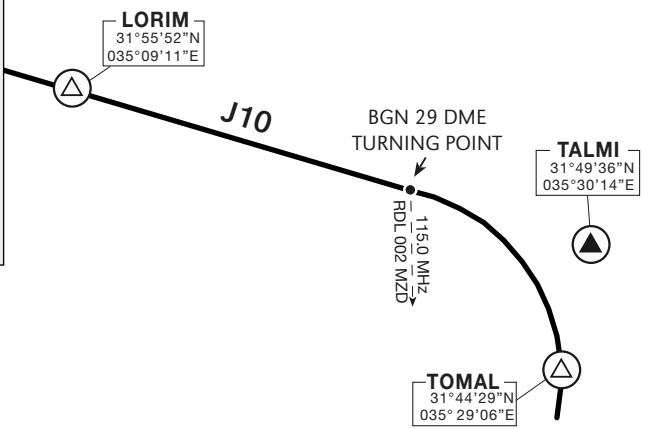


GENERAL INSTRUCTIONS

This SID includes noise preferential routes. For speed limitations - see noise abatement (refer to LLBG AD 2.21). As soon as practicable after take-off contact Ben-Gurion Departure on 120.50 MHZ. This SID requires a minimum climb gradient of 430' per NM (7%) up to 6 000':

Ground speed - KTS	90	120	150	180	210
MNM ROC - FPM	645	860	1075	1290	1505

If unable to comply, advise ATC before take-off.



COMMUNICATION FAILURE

1. Select mode A code 7 600.
2. Climb to cross BGN 6.5 DME eastbound at 6 000' or above.
3. Climb to FPL altitude and follow established procedure.

SPEED RESTRICTION
Max IAS 250 KTS below 10 000' except over water.